

Combi Gauges for Rail Cars

With one Measuring Unit

Model **RChg 125 – 1Fz**

Application

Pressure gauges model **RChg 125 – 1 Fz rBFr**, are applied for rail cars, especially for pneumatic brake systems. The instruments are provided with u-clamps for panel mounting and as combi gauge are equipped with direct and indirect lighting.

Standard Version

Accuracy

Class 1.0

Position of Installation

90°

Case

1.4301 (304 stainless steel)
with crimped-on ring, aluminium, black anodised

Temperature Limitations

Storage/Transport: -40° to +70° C (-40° to +158° F)
Operation: Ambience -40° to +60° C (-40° to +140° F)
Medium max. +60° C (+140° F)

Case Protection Type (EN 60529 / IEC 529)

IP 54 in front of the panel

Blow-out Device

Blow-out plug in the back of the case

Lighting

Directly 2 x BA9s 24 V / 2 W and
indirectly by lighting apertures in the case

Nominal Case Size

125 (mm) (5")

Wetted Parts

Connection: brass
Bourdon tube: bronze, soft soldered, c-form

Case Configuration

Position of the connection: lower back connection (r)
Mounting device: u-clamp for panel mounting (BFR)

Pressure Ranges

0 – 6, 0 – 10 and 0 – 12 bar

Process Connection

M 16x1.5 with chuck cone for cutting ring
L 10 according to DIN EN ISO 8434-1

Including restrictor screw in the pressure inlet port,
orifice-Ø 0.8 mm (0.03")

Window

Reflex-reduced laminated safety glass

Movement

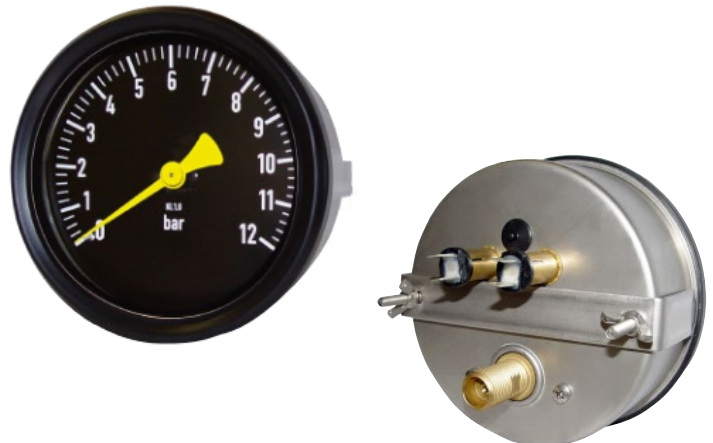
Brass / German silver

Dial

Aluminium black, white scale, with zero stop (stop pin)

Pointer

Aluminium, colour yellow (RAL 1016)



Safety Category according to EN 837-1

S1 pressure gauges with blow-out device

Options and others

- Instruments without combination of lighting, meaning either direct or indirect lighting
- Other pressure ranges, e. g. 0 – 16 bar
- Other than 90° installation
- Process connection with cutting ring and union nut
- Other process connections upon request
- Restrictor screw brass, orifice-Ø 1.0 mm (0.04"), in the inlet port
- Selectable colours for pointer, e. g. red (RAL 3026) or white (RAL 9010)
- Dial inscription (ZA) according to your demand, in terms of colour matching the pointer
- Coloured marks matching the pointer
- BA9s LED light 24 – 32 V, 48 – 75 V, 110 – 150 V

Ordering Information:

Model: **RChg 125 – 1 Fz rBFr**

Pressure range: **0 – 6 bar, 0 – 10 bar, 0 – 12 bar**

Process connection: **L 10**

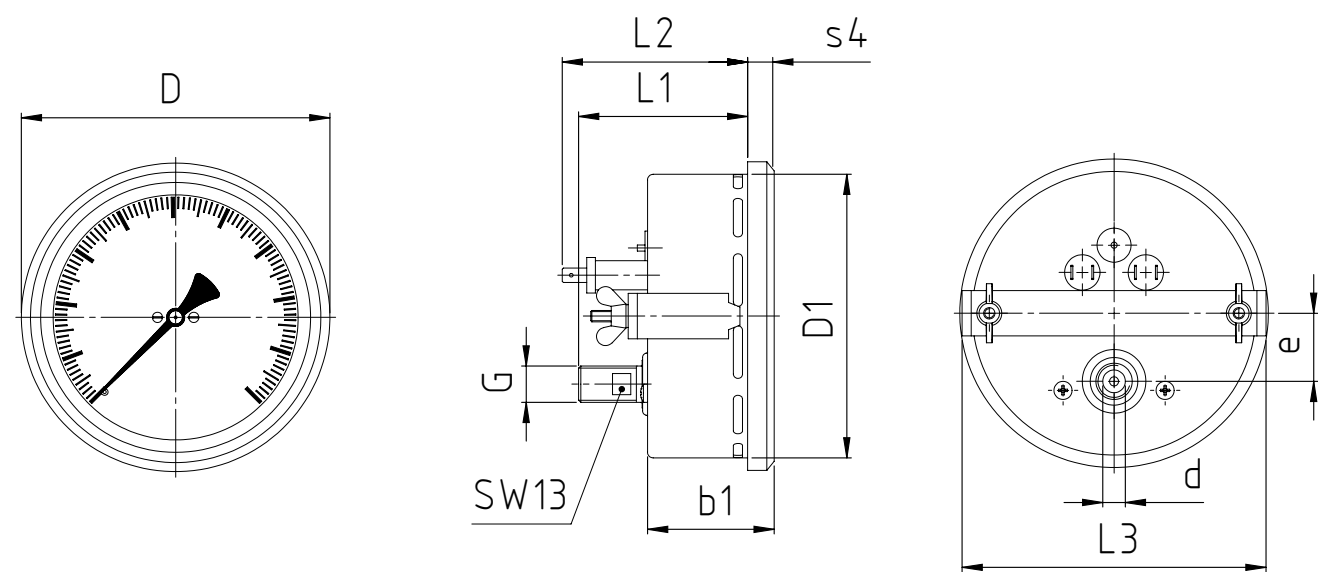
Specifics: e.g. dial inscriptions (**ZA**),
other position of installation etc.
(see above)

Example:

- RChg 125 – 1 Fz rBFr, 0 – 12 bar, L 10
ZA: "brake cylinder" white

Case Configurations, Dimensional Data and Weights

RChg 125 – 1 Fz rBFr



Dimensional data (mm/ inches) and weights (kg/ lb)

NCS	b1	D	D1	e	Process connection DIN EN ISO 8434-1 d ^{B11 1)}		L1	L2	L3	s4	SW	recommended panel cut out Ø	Weight (approx.)
125 5"	56 2.2	136 5.35	125 4.92	30 1.18	L10 .39	M 16x1.5	74 2.91	82 3.23	134 5.24	11 .43	13 .51	128 ± 1 5.04 ± 0.04	0.68 1.50

¹⁾Tolerance class according to ISO 286-2