

Tank Contents Gauge

TG 160-3

Type TG 160-3

Standard Versions

No pneumatic or electrical power required. Completely safe in hazardous environments. Sensor fully submersible or externally mounted. Simple and versatile installation. Sea Water, Oil and Chemical Resistant. Lloyds approved.

Accuracy (EN 837-1)

Ø160: ±1.6% F.S./ class 1.6

Case

Wide 160mm, bayonet, Stainless Steel AISI316/1.4301, IP-45 back flange, capillary bottom entry

Case Protection Type (EN 60 529 / IEC 529)

IP-45 for model TG 160-3

Capillary Material

Standard: red copper with yellow PVC cover
Armoured Capillary: red copper with stainless steel, AISI304/1.4301

Nominal Case Size

Ø160 mm (6")

Wetted Parts

Type Sensing element AISI316/1.4401, welded diaphragm

Case Configuration

Connection: chemical seal
Position of the connection: bottom connection (r),
Mounting device: back flange for surface mounting (Rh)

Pressure Ranges (EN 837-1)

0-800 mmWG up to
0-10,000 mmWG

Process Connection

Chemical Seal

Window

Mineral glass 4mm

Movement

Nickel plated brass

Dial

Aluminum, black figures on white background according to tank table

Pointer

Aluminum, black

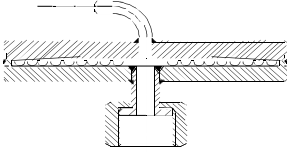
Ambient Temperature

0-55°C, full compensated

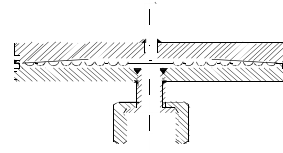


Case Configuration, Code Letters, Dimensional Data and Weights, Blow-out Device

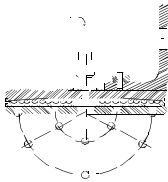
code: $\frac{3}{4}$ " BSP Coupling Nut



code: $\frac{3}{4}$ " BSP Coupling Nut



code: Tank Wall Mounting



code letters: Flange 4" ANSI 150 lbs RF

