

Bourdon Tube Pressure Gauges

Bayonet Ring Case Stainless Steel,
Safety Category S3 according to EN-837-1



RSCh 63
RSChG 63

Standard Versions

Information on general and metrological features (load limits / temperature limitations) and standard pressure ranges / scale divisions can be found in model overview 1000.

Accuracy (EN 837-1)

Class 1.6
Class 2.5 for pressure ranges 0-600 and 0-1,000 bar
(0-10,000 and 0-15,000 psi)

Case

Bayonet ring, 1.4301 (304 stainless steel)

Gehäuse-Schutzart (EN 60 529 / IEC 529)

IP 54,
IP 65 for model RSChG

Blow-out Device

Blow-out back; should the bourdon tube rupture, the entire case back separates, allowing full relief.

Case Ventilation

Model RSChG, without ventilation, but with internal pressure compensation by pressure equalizing membrane.

Gehäusefüllung

for model RSChG: glycerine

Nominal Case Size

63 (mm) (2½")

Wetted Parts

Type -3: Connection: 1.4571 (316 stainless steel)
Bourdon tube: 1.4571 (316 stainless steel),
argon arc welding,
≤ 60 bar (800 psi) c-form,
≥ 100 bar (1,500 psi) helical

Type -1: Connection: brass
Bourdon tube: bronze,
≤ 40 bar (600 psi) soft-soldered, c-form,
≥ 60 bar (800 psi) silver brazed, helical

Case Configuration

Connection: screwed
Position of the connection: bottom connection,
Model RSCh 63-3 and 63-6,
optional lower back connection (r)
without, optional back flange for
Mounting device: surface mounting (Rh) / front flange
for panel mounting (Fr), see page 2

Pressure Ranges (EN 837-1)

0-0.6 bar (0-10 psi) to 0-1,000 bar (0-15,000 psi) for type -3
0-0.6 bar (0-10 psi) to 0- 600 bar (0-10,000 psi) for type -1

Process Connection

G ¼ B (¼" BSP)

Window

Laminated safety glass

Movement

Stainless steel for type -3
Brass/German silver for type -1

Dial


Aluminum, black figures, white background



Pointer

Aluminum, black

Safety Category according to EN 837-1

S3, safety pressure gauge with break-proof solid front,
proved: pressure ranges up to 1,000 bar (15,000 psi) (type -3),
up to 600 bar (10,000 psi) (type -1),
bottom connection: RSCh and RSChG
lower back connection: RSCh 63-3
marking , see also sectional drawing overleaf.

Ordering Information, Standard Pressure Ranges, Options:

see pages 3 and 4

Special Versions and further options among others

- Special process connections, e. g. VCR-F, VCR-M, VCR-M short (see technical information sheet T01-000-006), others upon request
- Other pressure ranges and / or special scales, e.g. double scale bar/psi, coloured fields or areas, dial inscriptions, negative scale etc.
- Version as refrigeration gauge with temperature scale
- Case parts 1.4404 (316 L stainless steel)
- Increased case protection type, e. g. IP 65 without case filling, upon request
- Other case fillings upon request
- Model RSChG for ambient temperatures down to -40 °C (-40 °F) upon request. Our recommendation for ambient temperatures below -20 °C (-4 °F); models RChg resp. RChgG
- Position of connection radial at 3 o'clock, 9 o'clock or 12 o'clock (others upon request) or other than vertical installation (90°)
- GOST-version for Russia, Ukraine, Kazakhstan
- Sour gas-resistant version according to NACE

Accessory:

Chemical seals: see catalogue-heading 7
Electrical: limit switch contact assembly DS 1619.1 and catalogue-heading 9.1
Other accessory: see catalogue-heading 11



INSTRUMENTS TO INDUSTRY LTD

Euro Works - Hawksley Industrial Estate - Hawksley Street
Oldham - OL8 4PQ - United Kingdom

T: +44 (0)161 652 7741

F: +44 (0)161 621 0389

E: sales@itiuk.com

W: www.itiuk.com

1610

11/09

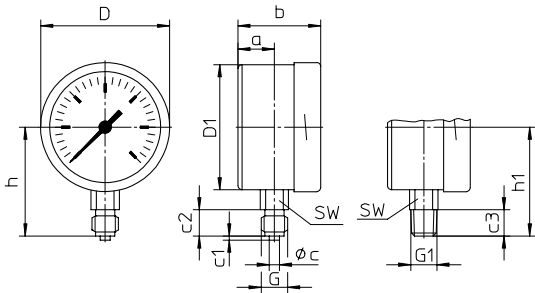
Case Configurations, Code Letters, Dimensional Data and Weights, Blow-out Device

Bottom connection

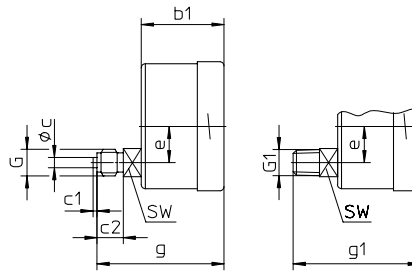
Lower back connection (only -3 and -6)

No mounting device

(no additional code letter)

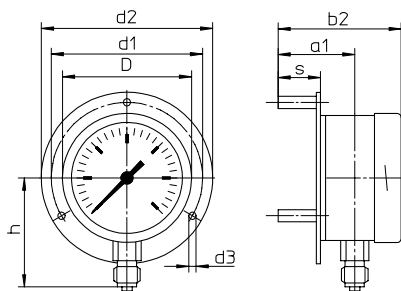


code letter: r



Back flange for surface mounting

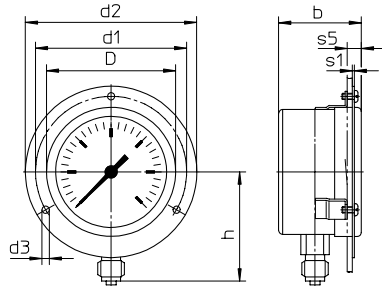
code letters: Rh



Version Rh including 3 separate mounting spacers.

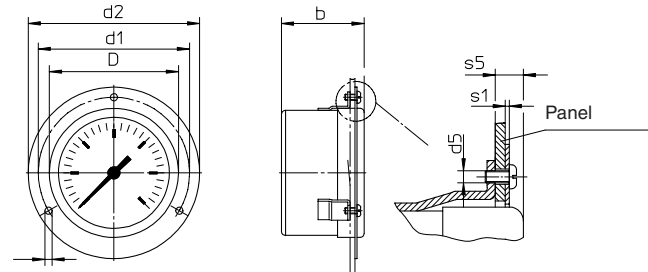
Front flange for panel mounting

code letters: Fr



(available upon request, but according to EN 837-1 not recommended)

code letters: rFr



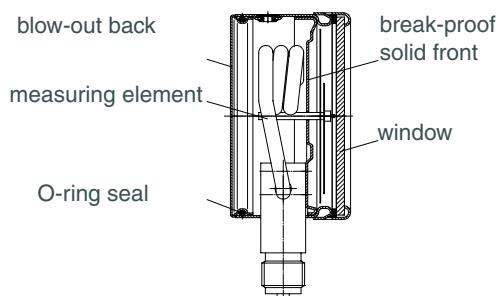
recommended panel cut out for $\varnothing 67 \pm 0.5 (0.02")$

Dimensional data (mm / inches) and weights (kg / lb)

NCS	a	a1	b	b1	b2	c	c1	c2	c3	D	D1	d1	d2	d3	d5	e	G	G1	g	g1	h ^{±1}	h1 ^{±1}
63 2 1/2"	18 .71	38 1.5	41 1.61	41 1.61	61 2.4	5 .2	2 .08	13 .51	13 .51	64 2.52	62 2.44	75 .95	85 3.35	3.6 .14	M3	18 .71	G 1/4 B 1/4" BSP M 12x1.5	1/4" NPT	63 2.48	63 2.48	54 2.13	54 2.13

s	s1	s5	SW	approx. weight ¹⁾	
				RSh	RShG
21 .83	1 .04	7 .28	14 .55	0.18 .39	0.25 .55

Schematic drawing



Ordering Information, Standard Pressure Ranges, Options

Basic Model:		Bourdon Tube Pressure Gauge, Bayonet Ring Case		RSCh
Case Filling	without glycerine fillable version			without code letters G (G)
Nominal Case Size:	case- Ø 63 (mm) (2½")			63
Wetted Material:	copper alloy			-1
	stainless steel			-3
Case Configuration:	case / connection	screwed		-6
	position of the connection:	lower back connection (only RSCh 63-3)		without code letters r
	Befestigungsvorrichtung:	without		without code letters
		back flange for surface mounting		Rh
	front flange for panel mounting		Fr	
Pressure Ranges:	-1,200 – 0 mbar	30" Hg vac. – 0		
	-0.6 – 0 bar			
	-1 – 0 bar			
	-1 – 0.6 bar	30" Hg vac. – 15 psi		
	-1 – 1.5 bar	30" Hg vac. – 30 psi		
	-1 – 3 bar	30" Hg vac. – 60 psi		
	-1 – 5 bar	30" Hg vac. – 100 psi		
	-1 – 9 bar	30" Hg vac. – 160 psi		
	-1 – 15 bar	30" Hg vac. – 200 psi		
		30" Hg vac. – 300 psi		
	0 – 0.6 bar	0 – 10 psi		
	0 – 1 bar	0 – 15 psi		
	0 – 1.6 bar			
	0 – 2.5 bar	0 – 30 psi		
	0 – 4 bar	0 – 60 psi		
	0 – 6 bar	0 – 100 psi		e. g. 0-6 bar
	0 – 10 bar	0 – 160 psi		
	0 – 16 bar	0 – 200 psi		
	0 – 25 bar	0 – 300 psi		
	0 – 40 bar	0 – 600 psi		
	0 – 60 bar	0 – 800 psi		
		0 – 1,000 psi		
	0 – 100 bar	0 – 1,500 psi		
	0 – 160 bar	0 – 2,000 psi		
	0 – 250 bar	0 – 3,000 psi		
		0 – 4,000 psi		
	0 – 400 bar	0 – 5,000 psi		
		0 – 6,000 psi		
	0 – 600 bar	0 – 10,000 psi		
	0 – 1,000 bar	for type -3 and -6	0 – 15,000 psi	
Process Connection:	standard thread	G ¼ B (¼"BSP)	-1	max. 0- 600 bar;
	Optionen:	¼" NPT	-3 and -6	max. 0-1,000 bar
		M 12x 1.5		
		G ⅜ B (⅜"BSP)	-1 and -6	max. 0- 400 bar;
		⅜" NPT	-3	max. 0- 600 bar
Options:	see page 4			
Example:				RSCh 63-3 rFr, 0-6 bar, G ¼ B

